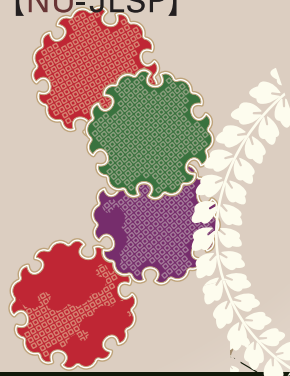
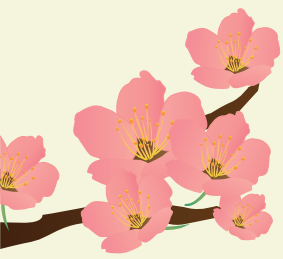


2017
Guide to the Nihon University
Japanese Language and
Japan Studies Program

[NU-JLSP]





Overview of Nihon University



Nihon University is one of Japan's largest private universities, comprising 12 colleges and 4 schools with 87 departments, 19 graduate schools, 25 attached and affiliated high schools, 13 attached and affiliated junior high schools, an elementary school and a kindergarten.

The university's forerunner, Nihon Law School, was founded in 1889, and since then Nihon University has continued to lead education and research with a consistently global perspective and progressive spirit.

Offering a diverse range of disciplines, as a true university with appeal, Nihon University undertakes various activities such as medical care and lifelong education, in addition to its educational and research activities, with a view to contributing to the further development of society.



Overview of the Japanese Language and Japan Studies Program (JLSP)

Nihon University offers the Japanese Language and Japan Studies Program (JLSP) to exchange students from overseas universities with which Nihon University has established inter-university exchange agreements. Under the JLSP, international exchange program students undergo short-term intensive Japanese language and cultural/social education. The program offers 3 subjects ; Japanese Language Subject (Comprehensive Japanese / Elective Japanese), Japan Studies Subject (taught in English), and Intercultural Experience Subject, (in which Japanese-speaking volunteers also participate).



Features of the Japanese Language and Japan Studies Program (JLSP)

Short-term Intensive Japanese Language Course = 150 hours/50 days



Approximately two-and-a-half-month period students study comprehensive Japanese language intensively for 150 hours (3 hours per day for 50 days); 150 hours is the basic number of study hours required to advance one level of the Japanese Language Proficiency Test.

1st [Summer] Term
(mid-May to late July)

2nd [Fall] Term
(mid-September to early December)

3rd [Spring] Term
(mid-January to late March)

* JLSP is a one-term program; the same program is offered three times in an academic year.

Japanese Language Course Level Placement = 5 Levels of Comprehensive Japanese Language (Compulsory Courses); 5 Subjects of Elective Japanese Language (Elective Courses)

Students are divided into courses according to the level of their Japanese language proficiency to enable them to study the language efficiently in a short period of time. The 5 compulsory comprehensive Japanese levels (A-E)* conforms to the study levels for the Japanese Language Proficiency Test.

Elective subjects are designed to focus on "students' direct experience and output" and enhance their autonomous learning.

*Levels are decided based on the results of a placement test conducted at the beginning of the program.



Understanding of Japanese Society/Culture and Intercultural Experience

To enable students to deepen their knowledge and understanding of Japanese society and culture, and also to



raise the awareness of intercultural literacy, the JLSP provides the Japan Studies Subject as well as the Intercultural Experience Subject. In the Japan Studies Subject, students study in English about Japanese economy, Japanese art, issues that modern Japanese society is facing, and Japanese behavioral patterns. In the Intercultural Experience Subject, students experience Japanese society and culture directly using Japanese words and expressions actually used by native speakers and coming into touch with their meaning as well as connotation while interacting with volunteers.

Collaboration with Volunteers

Japanese students from Nihon University participate as volunteers in the Intercultural Experience Subject in learning activities both inside and outside the classroom. Through these collaborative activities with volunteers, students deepen their exchange with Japanese people.



Japanese Language and Japan Studies Program (JLSP) Schedule



Japanese Language and Japan Studies Program (JLSP) Curriculum

Comprehensive Japanese					
Elementary	A		Compulsory Subject (5 course levels) Ten classes per week (2 classes per day) are required. (1.5 hours _ 10 classes _ 10 weeks) (1.5 hours _ 2 classes _ 50 days)	Required number of hours for studying Japanese Comprehensive Language: 150	
Upper- Elementary	B				
Intermediate	C				
Upper-Intermediate	D				
Advanced	E				
Elective Japanese					
Communication	CO	Interacting with Japanese volunteers, project work, etc.			
Creation	CR	Expressing your insights into Japanese society through photographs, videos, and writing, etc			
Inquiring	IN	Research aspects of Japanese society that interest you. Interview Japanese people and present results.			
Intercultural Experience	IE	Learn about traditional Japanese culture and other daily culture by direct experience. And present or write reports, etc.			
Autonomous Learning	AL	Determine a specific area to study, by yourself, create a plan, and learn autonomously while being supported by a teacher.			
Japan Studies				Compulsory Subject	
Japanese Society, Japanese Culture	JS1	4 topics on Japanese Society and Culture (organized in an omnibus fashion)		Required number of hours for studying Japan Studies: 42	
	JS2	Japanese Mind and Society			
	JS3	Topics in Contemporary Japanese Society			
Intercultural Experience				Compulsory Subjects	
Visit to Life Safety Learning Center	Honjo Bōsaikan		3 hours	Required number of hours for Intercultural Experience: 20	
Study Tour	Kamakura or Hakone or Yokohama		11 hours		
Seeing a Kabuki Performance	Kabukiza Theatre (Tokyo)		6 hours		

(Curriculum for 2017 is provided as a reference)

- Total number of study hours required: 212
- Course content is the same for each term.
- Students wishing to study under JLSP for more than one term study only Comprehensive Japanese and Elective Japanese from their 2nd term onwards.
- Comprehensive Japanese and Elective Japanese courses are also attended by international students other than JLSP students.

5 Week 5-9

Preparation and submission of a manuscript for the semester's commemorative issue

6 Week 9



Seeing a Kabuki Performance (Intercultural Experience III)

7 Week 10

Final Tests/Course Evaluation Period

8 Final Day of Courses

Closing Ceremony/Farewell Party



Comprehensive Japanese/Elective Japanese

Comprehensive Japanese

This course comprises compulsory courses aimed at comprehensively raising students' Japanese language reading/writing/listening/speaking proficiency. Courses are divided into 5 levels (A-E) and students study Japanese intensively in small classes of their levels for 150 hours during the term. Up to the Intermediate level, courses are based on textbooks and students comprehensively improve their overall Japanese language proficiency. At the Advanced level, there are separate classes for each language skill (reading/writing/listening/speaking/grammar) and different textbooks and materials are used to enable students to acquire an even higher level of Japanese language proficiency.

Activities outside the classroom and discussions with Japanese-speaking volunteers are conducted to enable students to use and practice the Japanese language skills they have learned.



Elective Japanese

5 elective subjects (Communication, Creation, Inquiring, Intercultural Experience, Autonomous

Learning) are placed for academic purposes. Students are able to improve Japanese language proficiency by using Japanese language that you learned in Comprehensive Japanese courses. Japanese volunteers of Nihon University join together. Students are able to choose subjects freely in accordance with their needs and interests.

Comprehensive Japanese/Elective Japanese Course Level Settings

Comprehensive Japanese Course Level		Elective Japanese Course Level				JLPT *	CEFR **	
A	Elementary	CO	CR	IN	IE	① AL	N5	A1
B	Upper-Elementary						N4	A2
C	Intermediate							
D	Upper-Intermediate			N2		B2		
E	Advanced						N1	C1

* Placement tests correspond to each level for the Japanese-Language Proficiency Test (JLPT).

** CEF-R (Common European Framework of Reference for Languages): a common evaluation standard for the achievements of learners of foreign languages in the European Community.

Japan Studies

Japan Studies Courses are compulsory courses taught in English, aimed at helping students enhance their knowledge of Japanese society, culture and people and think introspectively about questions they may have. Students attend lectures and participate in discussions on the Japanese culture, Japanese economy and various other subjects.



Intercultural Experience

The aim of this course is to encourage students to acquire the sense of intercultural literacy as well as global perspective by interacting with their surroundings of things and humans. Intercultural Experience courses are targeted at raising the awareness of students' views on Japanese, their own and friends' cultures and giving the students new perspectives through the following 3 opportunities to actually experience Japanese society and culture while fostering friendship with the volunteers.

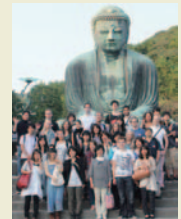
POINT Visit to Life Safety Learning Center

With a view to better understanding Japan's geographical characteristics, students learn about the prevalence of earthquakes, fires, and typhoons in Japan and experience simulations of how to respond in case any of these events occurs.



POINT Study tour

The aim of this trip is to enable students to come in contact with Japanese history and nature. The tour visits historically significant places such as Hakone, Kamakura or Yokohama, where students can see temples, shrines, and other historical landmarks and experience Zazen meditation and other practices, as well as enjoy viewing volcanic activity, autumn leaves, and other aspects of Japanese nature. During the Study tour, each student is accompanied by a Nihon University student volunteer "buddy" to deepen their cultural exchange.



POINT Seeing a Kabuki Performance

To enable students to better understand traditional Japanese culture, they attend a performance of Kabuki. Through this experience, students can deepen their understanding of the "sophistication" of traditional Japanese culture and how Japanese people enjoy their culture.



Class Timetable (Timetable for 2016 is provided as a reference)

	Time	Monday	Tuesday	Wednesday	Thursday	Friday
1	9:00-10:30	Comprehensive Japanese				
2	10:40-12:10	Comprehensive Japanese				
3	13:00-14:30	Japan Studies	Elective Japanese	Japan Studies	Elective Japanese	Intercultural Experience Subjects, Activities
4	14:40-16:10		Elective Japanese	Japan Studies	Elective Japanese	

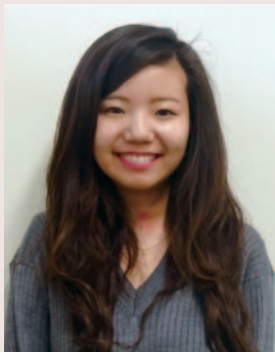
*The timetable may change from year to year.

Messages from Students/Volunteers



Teodor Holger Elias LÖVEBORG
(Stockholm University, Sweden)

Taking part in Nihon University's Japanese Language and Japan Studies Program (JLSP) was a really pleasant experience. The classes are rather small and are therefore highly interactive, and with Japanese volunteers also visiting our class, I found myself having lots of opportunities to practice my Japanese, whether it be during class, in the breaks or even outside of school hours. Morning classes end at around noon and are followed by a lunch break and then the Elective Japanese classes, as well as the occasional Cultural Studies class. The Elective Japanese classes let you study with more focus on one specific subject, such as grammar, reading, conversation, etc. Getting more practice in certain fields whilst at the same time having the opportunity to balance my studies and free time felt really nice. The Cultural Studies classes touched on subjects as lighthearted as popular culture, as well as more serious recent culture-related problems such as gender-equality issues, the decline in Japan's birthrate, and political disputes, each of which was presented by a researcher in the subject field. The program did not let me down as I was always looking forward to the next field trip or smaller outing. Making friends with the other JLSP students as well as the volunteers was great and gave me many chances to practice and use what I had learned in class. I would really recommend this program if you are looking to have an interactive experience where your learning extends beyond the classroom.



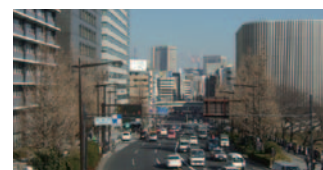
Saki OKUBO (School of Pharmacy, Nihon University)

One of the main merits of Nihon University's Japanese Language and Japan Studies Program (JLSP) is the fact that Japanese volunteers take part. They participate in classes as study partners and also often socialize with visiting students outside of the classroom, so it is possible to learn phrases and expressions from natural conversation settings between friends, not just more formal language. The JLSP also offers a range of activities such as visits to the Life Safety Learning Center, the Kabuki Theater, and Hakone, as well as social events such as a Welcome Party and a Farewell Party attended by the Japanese volunteers. This program not only provides students with fantastic experiences that will stay with you for life, it also helps you to make friends all over the world. I find it especially pleasing that exchange students often maintain regular contact with Japanese friends after they have returned to their home countries, and also meet again in Japan or abroad. Nihon University runs the only Japanese language program in which Japanese volunteers take part, so please join us here and make close friends among both Japanese students and other exchange students. Have a fantastic time at Nihon University!

Campus and Accommodations

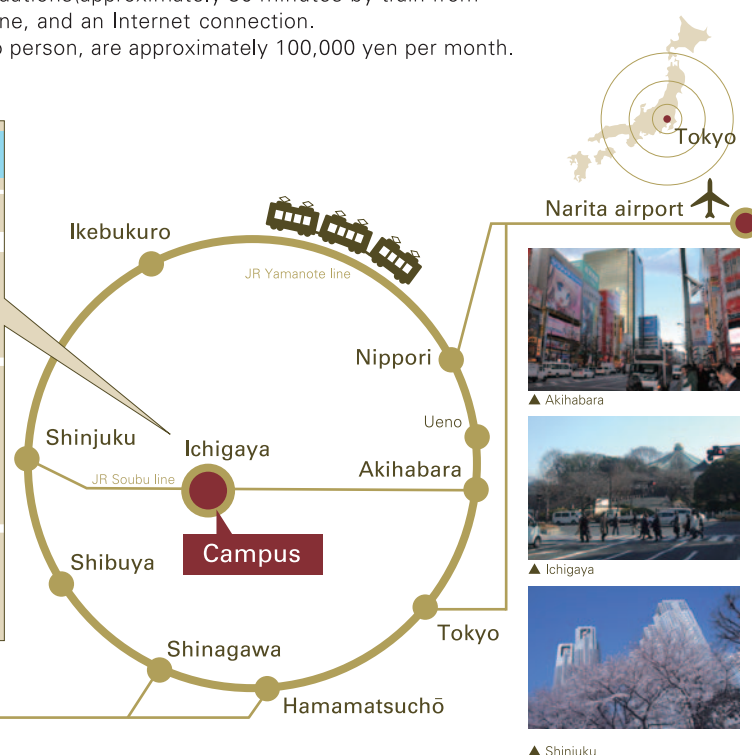
Campus (Nihon Daigaku Kaikan Daini Bekkan)

The Nihon University campus where JLSP is conducted is located in Ichigaya (Chiyoda-ku, Tokyo), a central area for Japanese business and commerce. The Nippon Budokan, Yasukuni Shrine, and other well-known sites are located nearby. Moreover, the campus is optimally located for accessing the main areas of Tokyo, with Tokyo Dome, Korakuen amusement park, Akihabara's electronics quarter, and Shinjuku-Fukutoshin sub-center located only 10-15 minutes away by train.



Accommodations

JLSP students are provided with meals and accommodations (approximately 30 minutes by train from campus) equipped with furniture, bath, shower, telephone, and an Internet connection. Living expenses in Japan, while differing from person to person, are approximately 100,000 yen per month.



▲ Akihabara



▲ Ichigaya



▲ Shinjuku

Data

International Academic Partnerships: 117 Institutions in 31 Nations and one area (as of 2016 academic year.)

Number of Students	
Graduate	2,768
Undergraduate	67,909
Distance Learning Division	6,540
Junior College	812
Special Training Schools	607
High Schools	28,844
Junior High Schools	6,689
Primary Schools	550
Kindergarten	371
Total	115,090

*As of May 1, 2016

Number of Teaching and Administrative Staff	Teach.	Admin.	Total
Colleges	2,792	1,386	4,178
Distance Learning Division	14	43	57
Junior College	52	6	58
Special Training Schools	28	3	31
Senior High Schools	553	102	655
Junior High Schools	89	8	97
Primary Schools	16	1	17
Kindergarten	7	5	12
Hospitals	-	2,148	2,148
Total	3,551	3,702	7,253

*As of May 1, 2016

Main Partner Universities of JLSP students
University of Cambridge(GBR)
Stockholm University(SWE)
Free University of Berlin(DEU)
Johannes Gutenberg-University in Mainz(DEU)
L' Université d'Avignon(FRA)
The University of Toronto(CAN)
Western Michigan University(USA)
The University of Alabama at Birmingham(USA)
Aarhus University(DNK)
Nanyang Technological University(SGP)

(and many others)



**International Affairs Division,
Office of Academic Affairs, Nihon University**

4-8-24 Kudan-Minami, Chiyoda-ku Tokyo, Japan 102-8275

Phone: +81-3-5275-8116 Fax: +81-3-5275-8315 E-mail: int@nihon-u.ac.jp

Japanese Language Program Website

<http://www.nihon-u.ac.jp/> (in Japanese)

<http://www.nihon-u.ac.jp/en/> (in English)

[cover design] *Blooming Cherry Blossoms* by Miki Kudo; Department of Design, College of Art, Nihon University

The design was made on the motif of "sakura", a cherry blossom inscribed in the school badge of Nihon University.

The work is meant to give an impression of walking a new path under full-blown cherry blossoms, feeling a gentle breeze in spring.